

Government of Andhra Pradesh
Department of Collegiate Education

PSC KVSC GOVERNMENT DEGREE COLLEGE

(Government Degree College)

Nandyal, Nandyal District – 518 501

Andhra Pradesh, India

Affiliated to Rayalaseema University Kurnool

STUDENT SATISFACTION SURVEY

(SSS)

Analysis Report

Academic Year: 2025 – 2026

Conducted by: Internal Quality Assurance Cell (IQAC)

Date of Submission: March 2026

"Committed to Quality Education and Student Excellence"

1. Introduction

The Student Satisfaction Survey (SSS) is a key quality assurance mechanism implemented by PSC KVSC Government Degree College, Nandyal, under the guidance of the Internal Quality Assurance Cell (IQAC). The survey is conducted annually to gather structured feedback from students on various academic, administrative, and infrastructural aspects of the institution.

This report presents a comprehensive analysis of the SSS data collected during the academic year 2025–2026. The findings aim to assist the college management in recognising areas of strength and identifying domains requiring prioritised development and improvement.

2. Objectives of the Survey

- To systematically evaluate student satisfaction across key academic and institutional parameters.
- To identify high-performing areas and acknowledge faculty and institutional contributions.
- To highlight areas requiring improvement and guide evidence-based policy decisions.
- To ensure accountability and transparency in teaching-learning and administrative processes.
- To comply with NAAC, IQAC, and UGC quality assurance requirements.

3. Survey Overview

Name of the College	PSC KVSC Government Degree College, Nandyal
Location	Nandyal, Nandyal District, Andhra Pradesh – 518 501
Type of Institution	Government Degree College (Co-Educational)
Affiliated University	Rayalaseema University Kurnool
Survey	Student Satisfaction Survey (SSS)
Evaluation Scale	0 – 4 (Average Score)
Total Parameters	10
Academic Year	2025 – 2026
Conducted by	Internal Quality Assurance Cell (IQAC)
Highest Scoring Area	Syllabus Completion – 3.65
Lowest Scoring Area	ICT Usage – 3.02

Overall Performance

Consistent & Balanced

4. Parameter-wise Analysis

The table below presents average scores, percentage contribution, and performance remarks for each of the ten survey parameters evaluated during the academic year 2025–2026:

Parameter	Avg Score (0 – 4)	% Contribution	Remark
Syllabus Completion	3.65	10.8%	Excellent
Evaluation Fairness	3.50	10.4%	Excellent
Teacher Preparation	3.50	10.4%	Excellent
Overall Satisfaction	3.42	10.2%	Very Good
Library	3.42	10.2%	Very Good
Communication Skills	3.42	10.2%	Very Good
Teaching Approach	3.32	9.9%	Good
Mentoring System	3.20	9.5%	Good
Infrastructure	3.10	9.2%	Average
ICT Usage	3.02	9.0%	Average

5. Bar Graph Analysis – Key Insights

5.1 Top Performing Parameters (Score ≥ 3.40)

- Syllabus Completion (3.65) – Highest score; reflects strong faculty commitment to completing syllabi within the academic calendar.
- Evaluation Fairness (3.50) – Students express high confidence in the impartiality and transparency of internal assessments.
- Teacher Preparation (3.50) – Faculty are well-prepared for their classes, positively impacting student learning outcomes.
- Overall Satisfaction, Library & Communication Skills (3.42 each) – Consistently high scores reflecting a positive institutional environment.

5.2 Moderately Performing Parameters (Score 3.20 – 3.39)

- Teaching Approach (3.32) – Pedagogical methods are appreciated; scope for more interactive and student-centric approaches.
- Mentoring System (3.20) – Students acknowledge mentoring efforts but feel more structured guidance is needed.

5.3 Parameters Requiring Focused Attention (Score < 3.20)

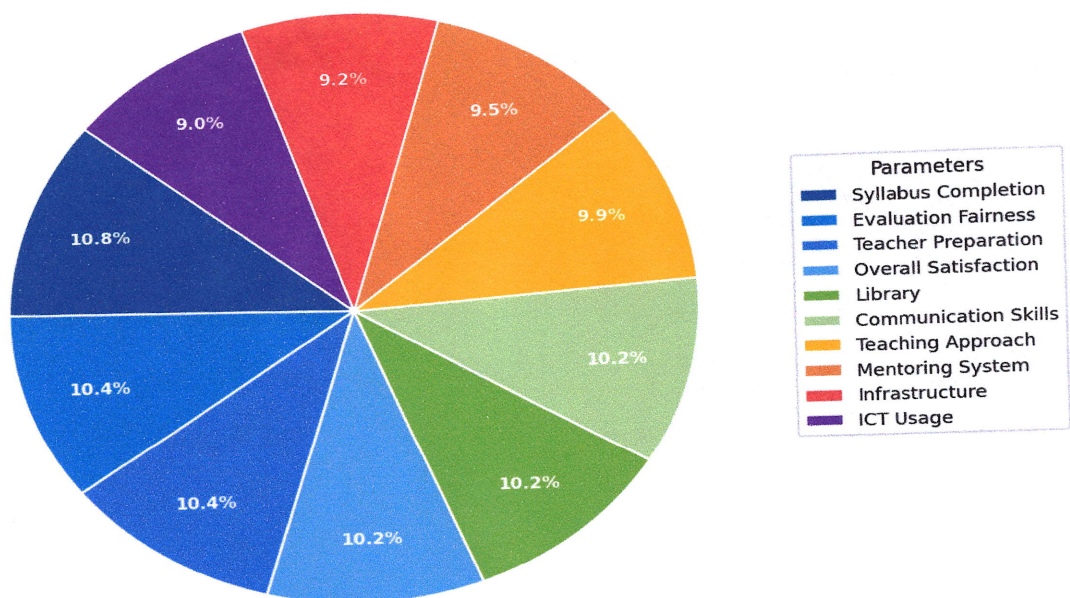
- Infrastructure (3.10) – Physical facilities such as classrooms, washrooms, and ramps need upgradation.
- ICT Usage (3.02) – Lowest score; technology integration in teaching is limited and must be urgently improved.

6. Pie Chart Analysis – Key Insights

The pie charts below illustrate the percentage share and score distribution of each survey parameter, along with a performance band grouping for the academic year 2025–2026:

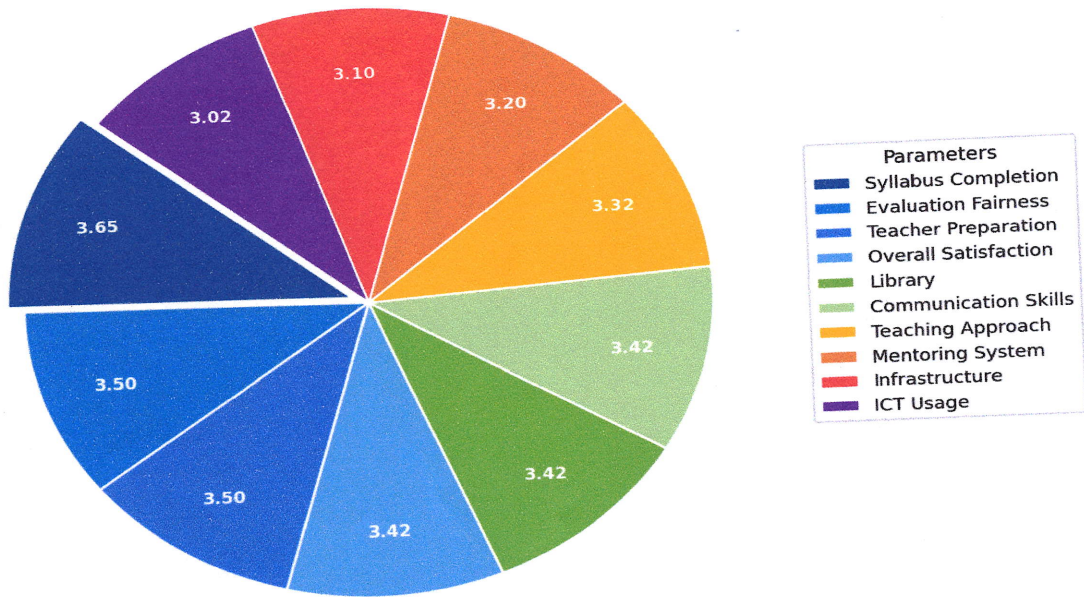
6.1 Parameter-wise Percentage Contribution

SSS - Parameter-wise % Contribution



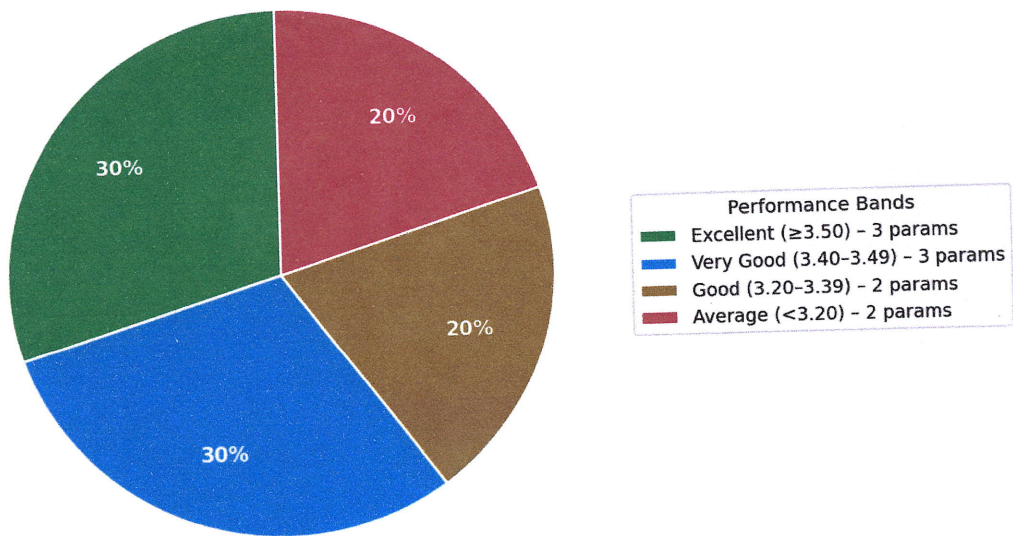
6.2 Average Score Distribution

SSS - Average Score Distribution (0 - 4 Scale)



6.3 Performance Band Distribution

SSS - Performance Band Distribution



Key Observations from Pie Charts:

- Most parameters contribute almost equally (9% – 11%), confirming balanced institutional performance.
- No single parameter dominates or critically underperforms, indicating overall consistency.
- ICT Usage (9.0%) and Infrastructure (9.2%) record the lowest shares — areas needing focused attention.
- 60% of parameters fall in the Excellent or Very Good band, reflecting strong overall quality.
- The near-equal distribution validates the institution's efforts to maintain quality across all dimensions.

7. Recommendations

Based on the SSS analysis, the following recommendations are made for institutional improvement:

Priority	Area	Recommended Action
High	ICT Usage	Establish smart classrooms; integrate e-learning tools
High	Infrastructure	Upgrade labs, toilets, ramps; improve cleanliness
Medium	Mentoring System	Structured mentor-mentee meetings; personal counselling
Low	Teaching Approach	Pedagogical training, workshops & faculty development

8. Conclusion

PSC KVSC Government Degree College, Nandyal demonstrates consistent and balanced performance across all ten parameters of the Student Satisfaction Survey 2025–2026. The near-equal distribution in the pie chart and the comparable scores across parameters confirm the institution's commitment to holistic quality education.

The college's strength lies in its excellent academic delivery — particularly in Syllabus Completion, Evaluation Fairness, and Teacher Preparation. To achieve holistic student satisfaction, focused investment in ICT infrastructure, physical facilities, and the mentoring system is strongly recommended.

academic foundation and consistent performance. Strategic focus on ICT, Infrastructure, and Mentoring will elevate

This report has been prepared by the Internal Quality Assurance Cell (IQAC) of PSC KVSC Government Degree College, Nandyal, based on data collected through the Student Satisfaction Survey for the academic year 2025-2026.

S.P. [Signature]
16/3/2026

IQAC Coordinator
PSC KVSC Govt. Degree College
Nandyal

[Signature]
16/3/26

Principal
PSC KVSC Govt. Degree College
Nandyal

Principal
PSC KVSC Govt. College
Nandyal-518 502, Nandyal(Dt.), A.P.



CURRICULUM FEEDBACK ANALYSIS

The institution has established a systematic and structured mechanism to collect, analyze, and utilize feedback on the curriculum from all key stakeholders, namely students, teachers, alumni, and parents. This process plays a vital role in ensuring continuous quality enhancement and alignment of the curriculum with academic standards, industry requirements, and societal needs, as emphasized by NAAC under Criterion I – Curricular Aspects.

Feedback is collected periodically through Google Forms, covering various aspects such as curriculum design, relevance to stakeholder needs, employability skills, higher education preparedness, research orientation, and social responsibility. The responses are systematically analyzed using percentage-based methods and graphical representations to derive meaningful insights.

The institution actively involves all stakeholders in the feedback process:

- Students provide insights on curriculum delivery, relevance, and learning outcomes.
- Teachers contribute perspectives on curriculum design, content adequacy, and implementation.
- Alumni offer valuable inputs based on real-world application and career experiences.
- Parents share their views on overall development, career readiness, and value-based education.

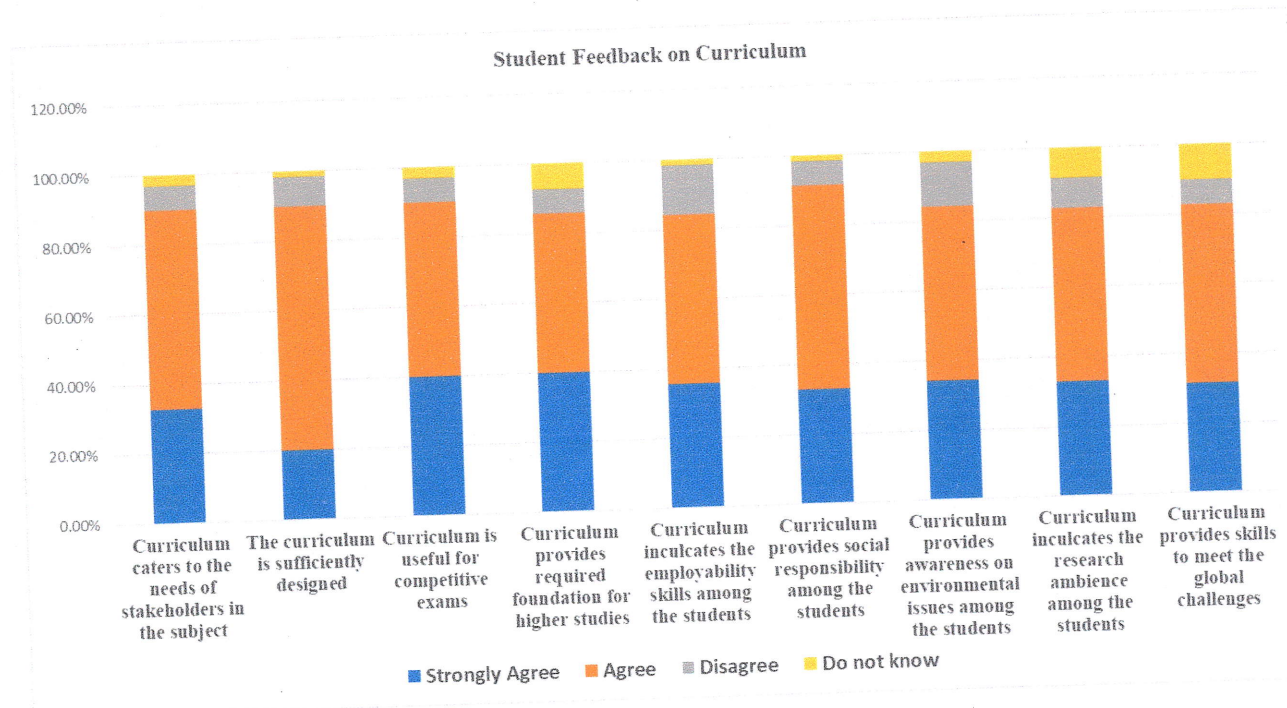
Based on the feedback received, the institution undertakes appropriate measures for curriculum enrichment and quality improvement.



PSC & KVSC GOVERNMENT COLLEGE, NANDYAL
ACADEMIC YEAR 2025-26

STUDENT FEEDBACK ON CURRICULUM:

Parameter (or) Question	Strongly Agree	Agree	Disagree	Do not know
Curriculum caters to the needs of stakeholders in the subject	32.86%	57.14%	7.14%	2.86%
The curriculum is sufficiently designed	20.00%	70.00%	8.57%	1.43%
Curriculum is useful for competitive exams	40.00%	50.00%	7.14%	2.86%
Curriculum provides required foundation for higher studies	40.00%	45.71%	7.14%	7.14%
Curriculum inculcates the employability skills among the students	35.71%	48.57%	14.29%	1.43%
Curriculum provides social responsibility among the students	32.86%	58.57%	7.14%	1.43%
Curriculum provides awareness on environmental issues among the students	34.29%	50.00%	12.86%	2.86%
Curriculum inculcates the research ambience among the students	32.86%	50.00%	8.57%	8.57%
Curriculum provides skills to meet the global challenges	31.43%	51.43%	7.14%	10.00%





PSC & KVSC GOVERNMENT COLLEGE, NANDYAL
ACADEMIC YEAR 2025-26

Interpretation of Student Feedback on Curriculum

The analysis of student feedback shows that the curriculum is well-designed, relevant, and satisfactory, with more than 80% positive responses (Agree + Strongly Agree) across all parameters.

This indicates that the curriculum is meeting academic expectations effectively.

Positive Areas:

The curriculum is well-structured, relevant, and effective in meeting stakeholder needs, supporting higher studies and competitive examinations, and promoting social responsibility with a high level of student satisfaction.

Areas to be Improved:

The curriculum needs enhancement in employability skills, research orientation, environmental awareness, and global competencies through increased practical exposure, industry integration, and contemporary content inclusion.

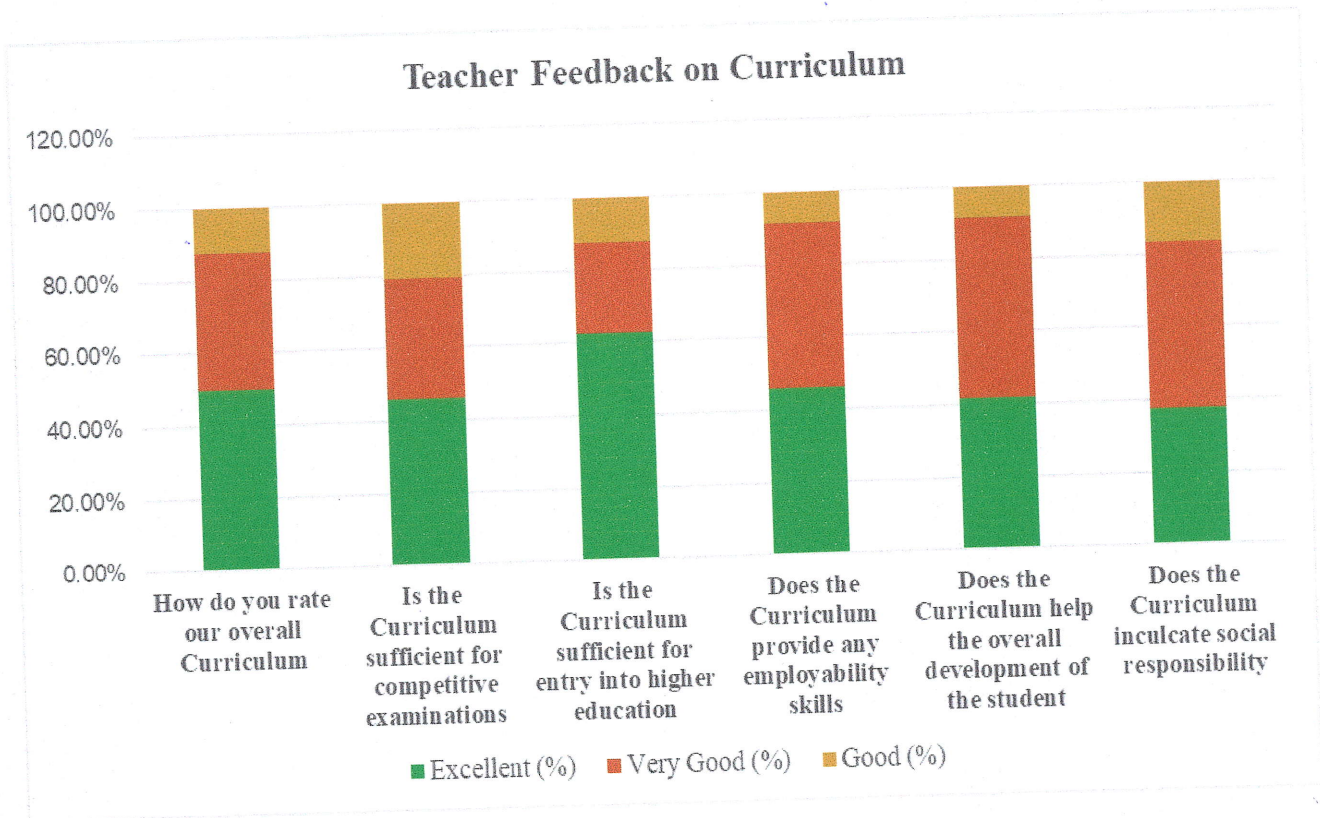
Prasadula
28/3/26
Principal
PSC & KVSC Govt. College
Nandyal-518 502, Nandyal(Dt.), A.P.



PSC & KVSC GOVERNMENT COLLEGE, NANDYAL
ACADEMIC YEAR 2025-26

Teacher Feedback on Curriculum

Parameter (or) Question	Excellent (%)	Very Good (%)	Good (%)
How do you rate our overall Curriculum	50.00%	37.50%	12.50%
Is the Curriculum sufficient for competitive examinations	45.83%	33.33%	20.83%
Is the Curriculum sufficient for entry into higher education	62.50%	25.00%	12.50%
Does the Curriculum provide any employability skills	45.83%	45.83%	8.33%
Does the Curriculum help the overall development of the student	41.67%	50.00%	8.33%
Does the Curriculum inculcate social responsibility	37.50%	45.83%	16.67%





PSC & KVSC GOVERNMENT COLLEGE, NANDYAL
ACADEMIC YEAR 2025-26

Interpretation of Teacher Feedback on Curriculum:

The feedback analysis reveals that the curriculum is well-structured and effective, with the majority of faculty rating it as Excellent and Very Good. The curriculum is particularly strong in supporting higher education, where 62.5% of respondents rated it as excellent. It also contributes significantly to overall student development and employability skills.

However, comparatively higher "Good" responses in areas such as competitive examinations and social responsibility indicate scope for further improvement. The feedback suggests a need to enhance curriculum components related to competitive exam preparation and value-based education.

Key Findings

Strengths

- Curriculum is well-designed and comprehensive
- Strong support for higher education progression
- Promotes overall student development
- Provides adequate employability skills

Areas for Improvement

- Need to strengthen competitive examination orientation
- Enhance value-based and social responsibility components
- Increase industry and practical exposure

Prasanna
Principal 28/3/26
PSC & KVSC Govt. College
Nandyal-518 502, Nandyal(Dt.), A.P.



PSC & KVSC GOVERNMENT COLLEGE, NANDYAL ACADEMIC YEAR 2025-26

Alumni Feedback on Curriculum:

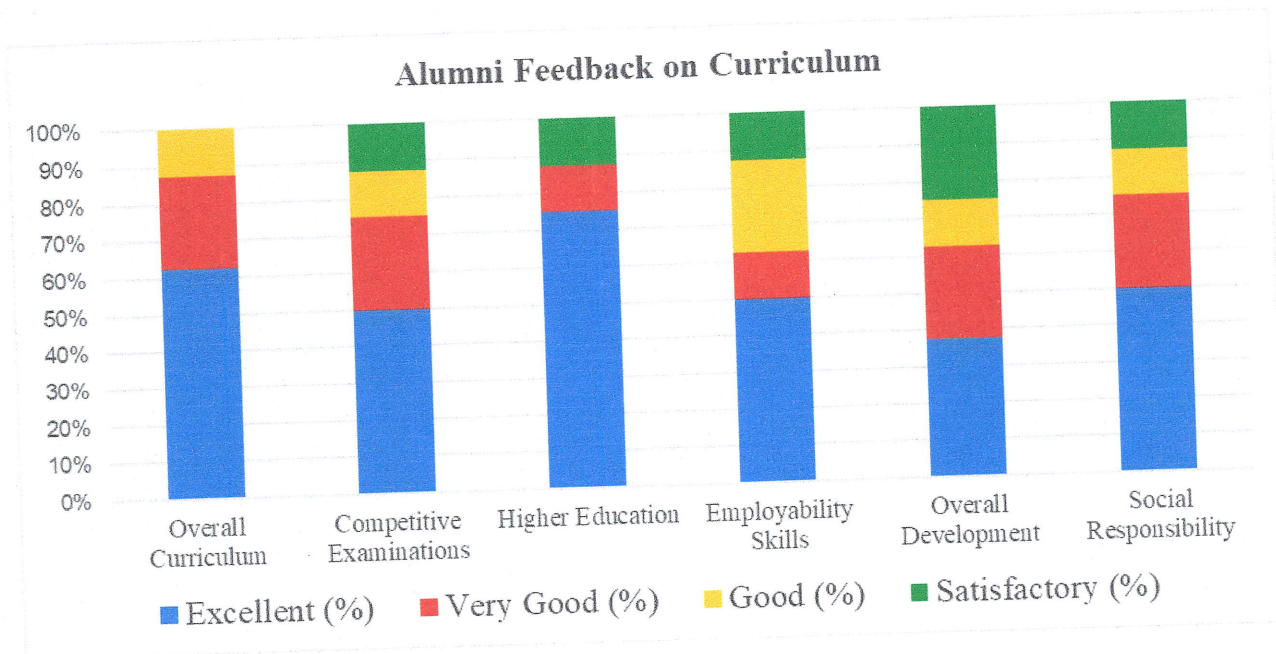
The institution collects feedback from alumni to assess the effectiveness and relevance of the curriculum in real-world applications. Alumni feedback plays a crucial role in evaluating how well the curriculum prepares students for higher education and employment.

Objectives of Feedback

- To evaluate the relevance of curriculum in real-life and professional contexts
- To assess its effectiveness in higher education and employability
- To identify areas for curriculum enhancement

Feedback Analysis:

Question	Excellent (%)	Very Good (%)	Good (%)	Satisfactory (%)
Overall Curriculum	62.50%	25.00%	12.50%	—
Competitive Examinations	50.00%	25.00%	12.50%	12.50%
Higher Education	75.00%	12.50%	—	12.50%
Employability Skills	50.00%	12.50%	25.00%	12.50%
Overall Development	37.50%	25.00%	12.50%	25.00%
Social Responsibility	50.00%	25.00%	12.50%	12.50%





PSC & KVSC GOVERNMENT COLLEGE, NANDYAL
ACADEMIC YEAR 2025-26

Interpretation Alumni Feedback on Curriculum:

The alumni feedback indicates that the curriculum is highly relevant and effective, particularly in supporting higher education, where 75% of respondents rated it as excellent. The curriculum is also appreciated for its overall design and its role in developing employability skills and social responsibility.

However, some alumni responses fall under *Good* and *Satisfactory*, especially in areas such as overall development and employability skills, indicating scope for improvement. These responses suggest the need to enhance practical exposure, industry relevance, and skill-based components of the curriculum.

Key Findings:

Strengths

- Strong support for higher education progression
- Curriculum is relevant and well-structured
- Promotes social responsibility
- Provides basic employability skills

Areas for Improvement

- Enhance practical and industry-oriented learning
- Improve overall student development aspects
- Strengthen competitive exam orientation
- Increase skill-based and job-oriented content


28/3/26
Principal
PSC & KVSC Govt.College
Nandyal-518 502,Nandyal(Dt.),A.P.

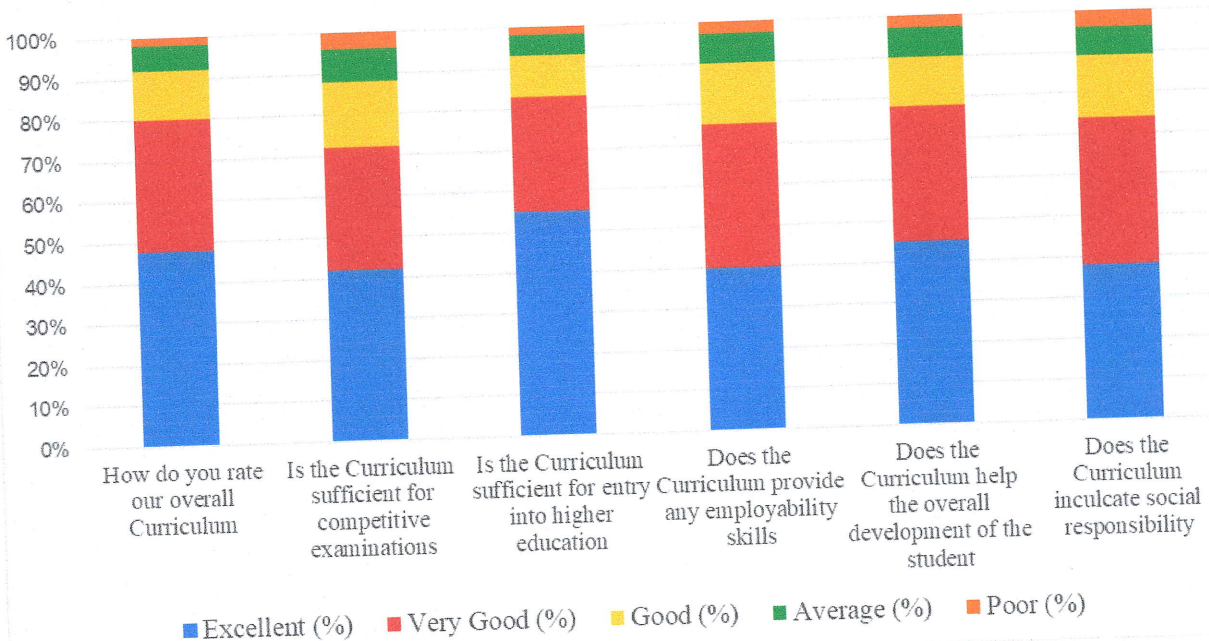


PSC & KVSC GOVERNMENT COLLEGE, NANDYAL
ACADEMIC YEAR 2025-26

Parent Feedback on Curriculum:

Question	Excellent (%)	Very Good (%)	Good (%)	Average (%)	Poor (%)
How do you rate our overall Curriculum	48%	32%	12%	6%	2%
Is the Curriculum sufficient for competitive examinations	42%	30%	16%	8%	4%
Is the Curriculum sufficient for entry into higher education	55%	28%	10%	5%	2%
Does the Curriculum provide any employability skills	40%	35%	15%	7%	3%
Does the Curriculum help the overall development of the student	45%	33%	12%	7%	3%
Does the Curriculum inculcate social responsibility	38%	36%	15%	7%	4%

Parent Feedback on Curriculum





PSC & KVSC GOVERNMENT COLLEGE, NANDYAL
ACADEMIC YEAR 2025-26

Interpretation of Parent Feedback on Curriculum:

- Parents have expressed overall satisfaction, with a majority of responses in *Excellent* and *Very Good* categories.
- The curriculum is particularly appreciated for:
 - Supporting higher education
 - Ensuring overall student development
- Moderate responses in areas like:
 - Competitive examinations
 - Employability skillsindicate scope for improvement
- A small percentage of *Average* and *Poor* responses suggest the need for:
 - Better career-oriented training
 - Increased practical exposure

ABDAR RUCALA
28/3/26

Principal
PSC & KVSC Govt. College
Nandyal-518 502, Nandyal(Dt.), A.P.



PSC & KVSC GOVERNMENT COLLEGE, NANDYAL
ACADEMIC YEAR 2025-26

Action Taken Report

1. Student Feedback on Curriculum – Action Taken Report

Feedback Area	Action Taken	Outcome
Need to improve employability skills	Introduced Certificate Courses and APSSDC Skill Hub programs focusing on industry-relevant skills	Improved employability; students gaining job-oriented skills and placements
Lack of practical exposure	Implemented project-based learning, internships, and hands-on training	Enhanced practical knowledge and application skills
Environmental awareness needs improvement	Conducting Swarnandhra & Swatcha Andhra Programme every 3rd Saturday (Clean & Green, E-waste, plastic management, renewable energy, recycling)	Increased environmental awareness and social responsibility
Need for research and global exposure	Conducting workshops, seminars, and awareness programs	Improved research orientation and global understanding
Career progression	Career guidance and counseling sessions	Many students opting for higher education



PSC & KVSC GOVERNMENT COLLEGE, NANDYAL
ACADEMIC YEAR 2025-26

2. Teacher Feedback on Curriculum – Action Taken Report

Feedback Area	Action Taken	Outcome
Enhance skill-based learning	Introduced Certificate Courses and APSSDC Skill Hub training programs	Improved student skill development and job readiness
Improve competitive exam orientation	Provided coaching support, guidance, and practice sessions	Better preparation for competitive examinations
Strengthen curriculum delivery	Adoption of ICT-enabled teaching, case studies, and practical sessions	Improved teaching-learning effectiveness
Promote value-based education	Regular implementation of Swarnandhra & Swatcha Andhra Programme	Enhanced social responsibility and environmental awareness
Industry relevance	Integration of emerging technologies and industry topics	Curriculum aligned with current trends



PSC & KVSC GOVERNMENT COLLEGE, NANDYAL
ACADEMIC YEAR 2025-26

3. Alumni Feedback on Curriculum – Action Taken Report

Feedback Area	Action Taken	Outcome
Need industry-oriented curriculum	Introduced Certificate Courses and APSSDC Skill Hub initiatives	Improved employability and industry readiness
Improve employability skills	Conducted skill development programs, internships, and training sessions	Many students securing placements
Enhance higher education support	Career guidance and mentoring programs	Increased number of students pursuing higher education
Improve environmental and social awareness	Conducting Swarnandhra & Swatcha Andhra Programme activities	Strengthened community engagement and sustainability awareness
Curriculum upgradation	Inclusion of latest technologies and industry practices	Curriculum remains relevant and updated



PSC & KVSC GOVERNMENT COLLEGE, NANDYAL
ACADEMIC YEAR 2025-26

4. Parent Feedback on Curriculum – Action Taken Report

Feedback Area	Action Taken	Outcome
Improve career readiness	Introduction of Certificate Courses and APSSDC Skill Hub training	Enhanced job opportunities and student placements
Need better competitive exam support	Conducted coaching sessions and awareness programs	Improved exam preparedness
Improve overall development	Organized workshops, seminars, and extracurricular activities	Holistic student development achieved
Environmental and social responsibility	Regular Swarnandhra & Swatcha Andhra Programme initiatives	Increased awareness of sustainability practices
Higher education opportunities	Career counseling and awareness sessions	More students opting for higher education